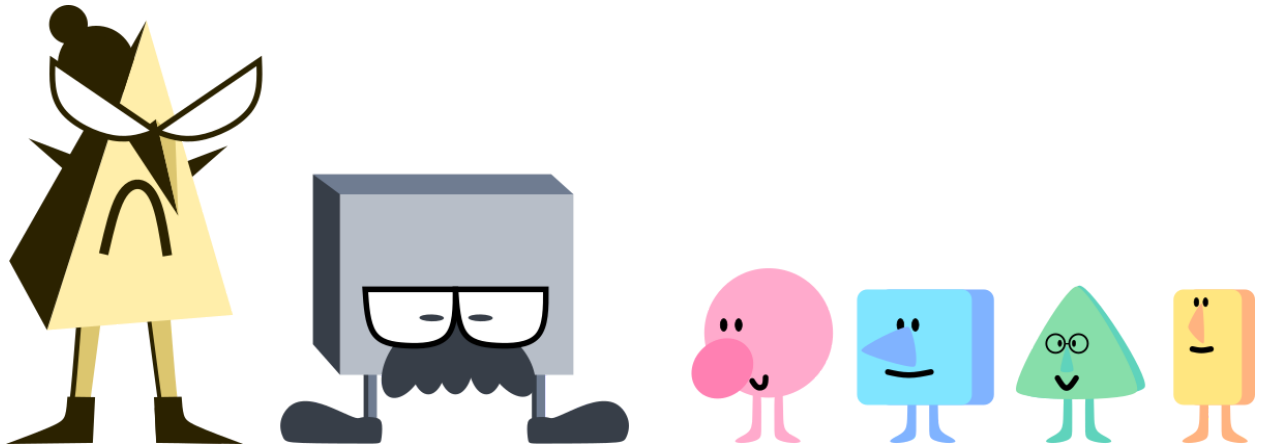
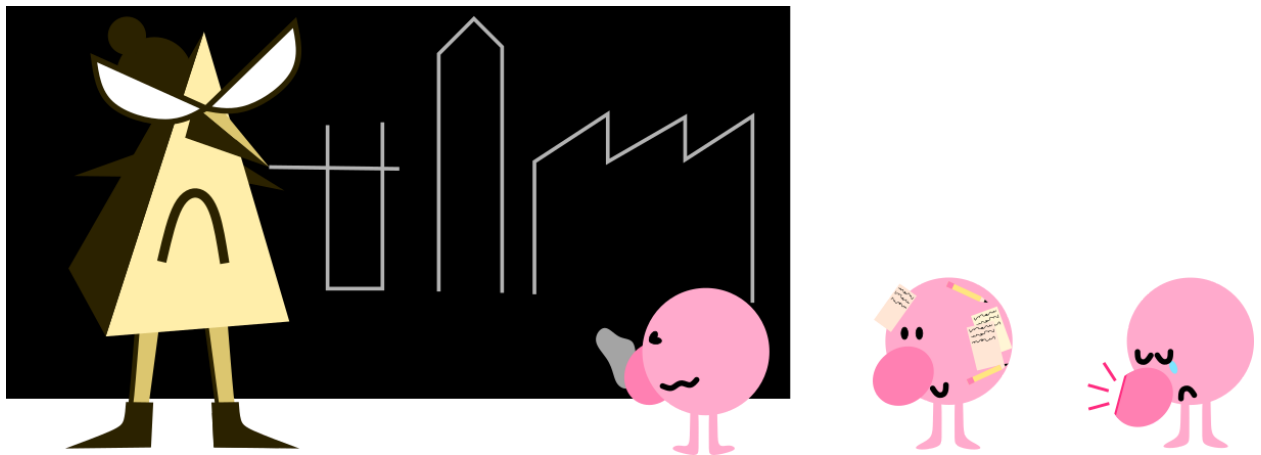


ROUNDED EDGES

Struggling in an environment that is not well suited for connection and engagement. Those who are in leadership do not have a high capacity for engagement. They are resistant to engage and find the neediness for engagement a disturbance to their main goal, shaping people into tools. The main character could be a rounder, softer shape that struggles to perform tasks expected of them. This could be a school, where the teachers are strict and disengaged. The young students are more playful but are being forced into routine and algorithmic work.



The main character might stick to objects/people as they move around. This reflects their interest to engage with the world, however, it can be seen as a disturbance, meandering and slowing the progress of expected tasks. The tasks they are given could revolve around sharp edges, carving into a surface or chipping into something. Others may perform this with relative ease, however, our main character struggles with their round shape. As they push themselves to double down on the tasks, we could see a painful process of them grinding down their round edges into a point.



These painful points now make it difficult for the main character to get close with others as they are sharp and pointy. This is also reflected in the world around them, with sharp architecture and sharp grown-ups. There is a pressure to become a more defined and angled shape to perform your role in

society. A lot of the work in this world demands sharp edges, but as the people develop into perfect tools, they lose the capacity to connect to one another.

