

# CPS MAZE



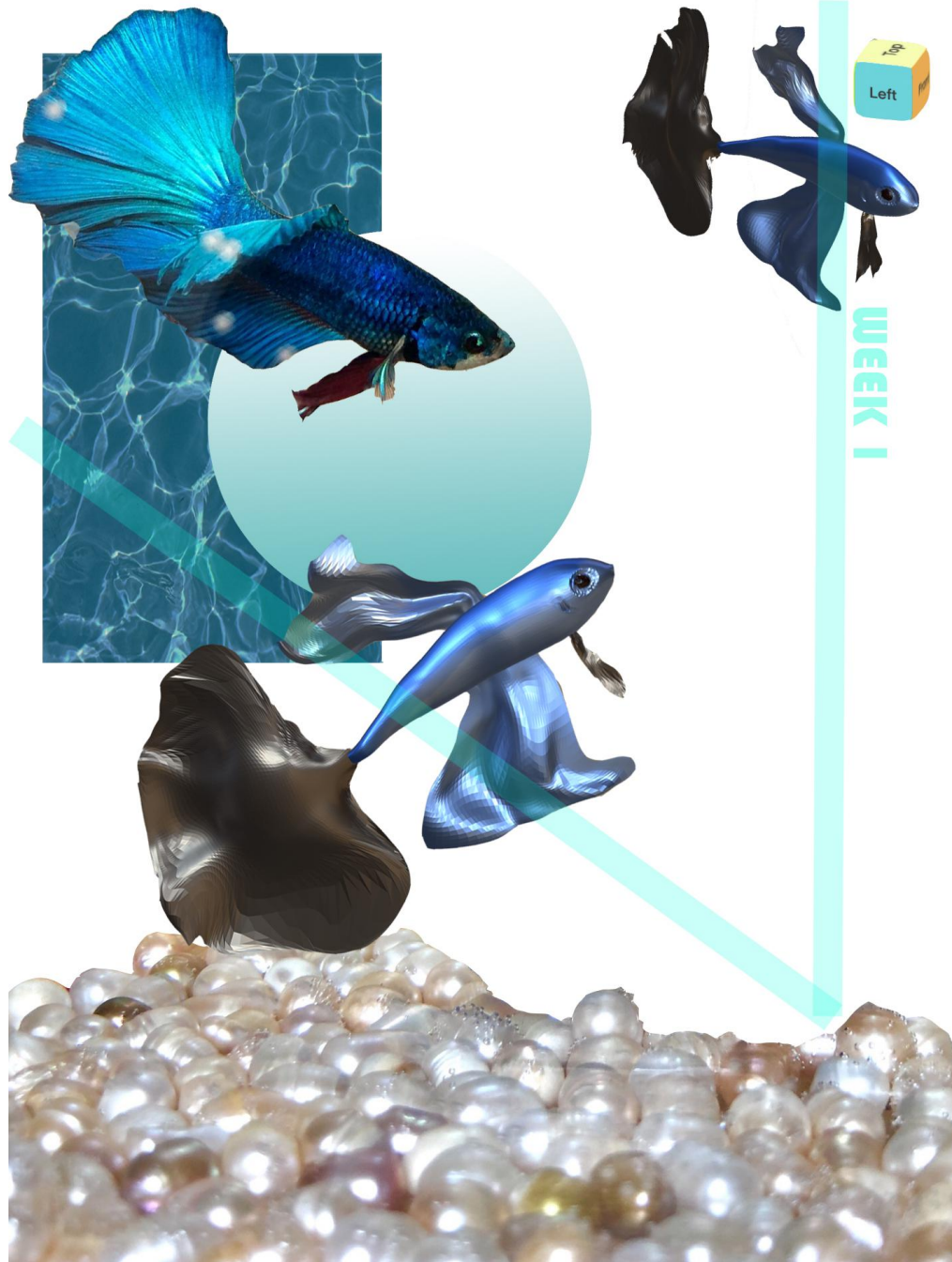
Xiying Yao  
Eve  
3729319

# Direction for use



**Try to found my object in remake project and click it**

**Ps: click original project on right bottom to return**



## Week1 CLUE

**THEME: Observation**

**FORM: 3D model**

**INSPIRATION**

**ELEMENTS: My pet**

**Tony, a Thailand**

**betta/ Nomad(a**

**modeling app)**



## Week2 CLUE

**THEME: Tinkering**

**FORM: 2D animation**

**INSPIRATION**

**ELEMENTS: pearl/watermelon/banana  
/FlipClip(a  
animation app)**

## Week3 CLUE

**THEME: Found Object**

**FORM: Stop motion**

**animation**

**INSPIRATION**

**ELEMENTS: Car/Plasti**

**cene**





## Week4 CLUE

**THEME: Place**

**FORM: Black and white drawing**

**INSPIRATION**

**ELEMENTS:Dragon/**

**Castle/ Floating**

**island**

**WEEK 5**



# **Week 5 CLUE**

**THEME: Object  
Oncology**

**FORM: Four-frame  
comic**

**INSPIRATION**

**ELEMENTS: milk/  
cow/apple/chicken/e  
gg/apple tree**



## **Week7 CLUE**

**THEME: Time**

**FORM: Clour painting  
& 2D animation**

**INSPIRATION**

**ELEMENTS:Four**

**searson/moon/flower  
/fallen leaves/cloud**



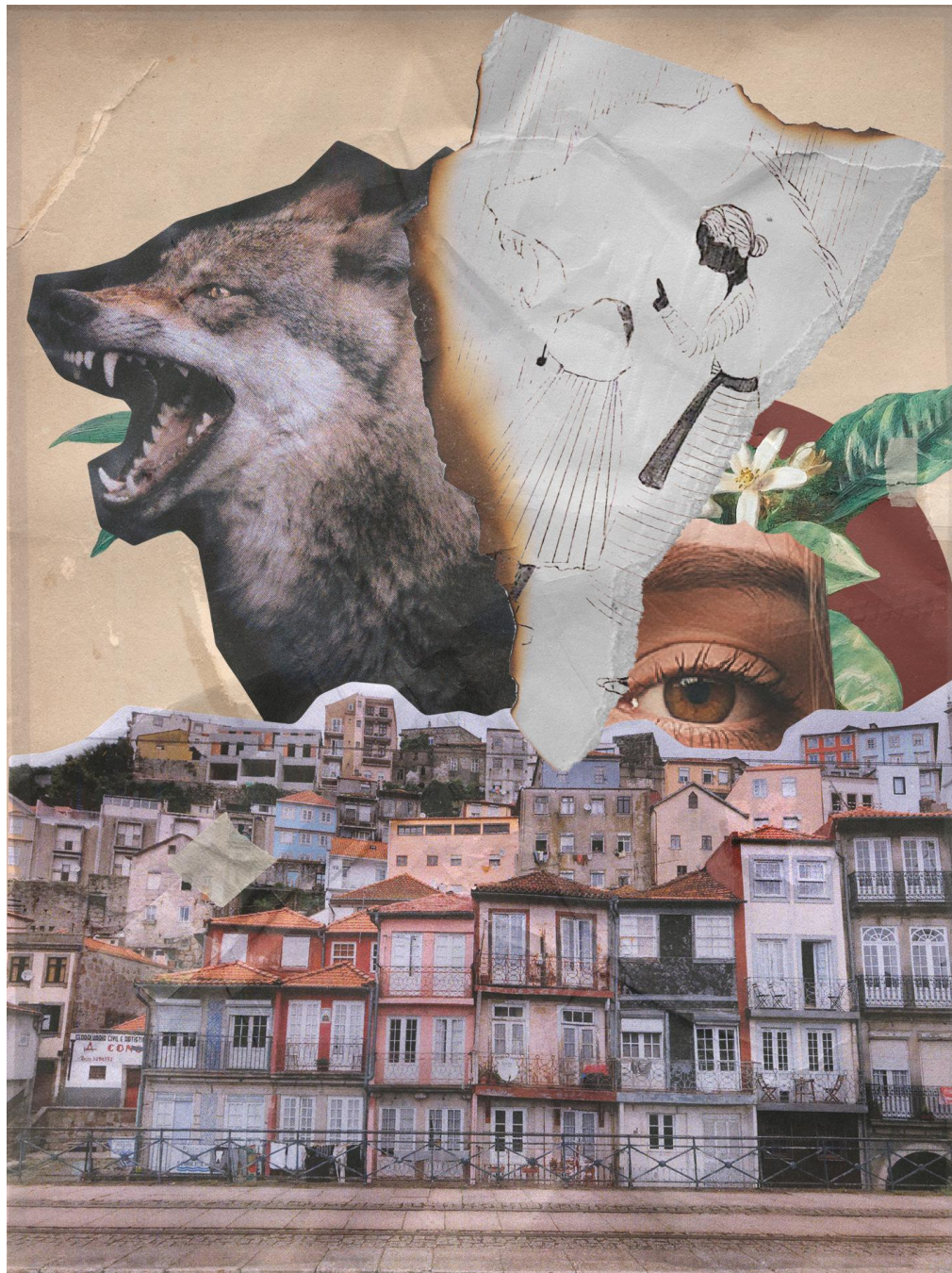


## Week 8 CLUE

**THEME: Characters,  
environment and  
events**

**FORM: 2 Paintings  
INSPIRATION**

**ELEMENTS: Computer  
desk/wacom/ipad/ani  
mation student**



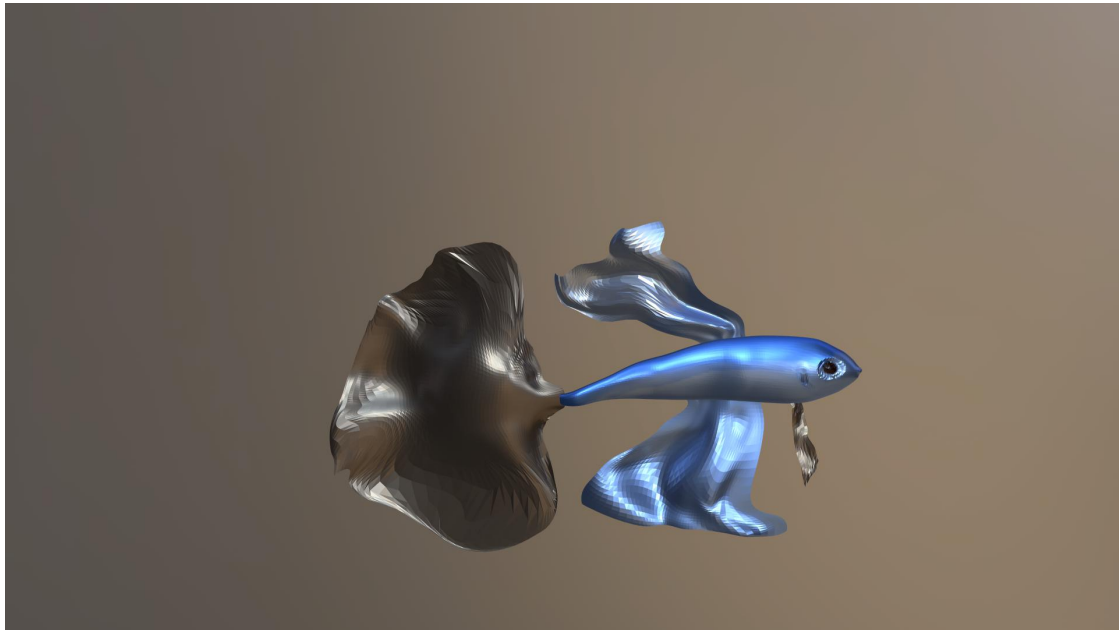
## **Week 9 CLUE**

**THEME: Rules and Forces**

**FORM: Paintings**

**INSPIRATION**

**ELEMENTS: Fairy tale/little red riding hood/line/black and white**





FlipaClip









CPS Week 7  
Xiying Yao  
Eve  
S3729319





